

REGION 1-NORTHWEST GEORGIA

Bartow • Catoosa • Chattooga • Dade • Fannin
Floyd • Gilmer • Gordon • Haralson • Murray
Paulding • Pickens • Polk • Walker • Whitfield

GEORGIA ROAD FREIGHT

TOTAL ROADWAY MILES
10,115 **1,629**
(State and County Miles) (Total City Streets)

INBOUND TRUCK FREIGHT

TRUCK INBOUND TONS: 19,978,567
TRUCK INBOUND VOLUME: 1,913,472
TRUCK INBOUND VALUE: \$14,317,547,957

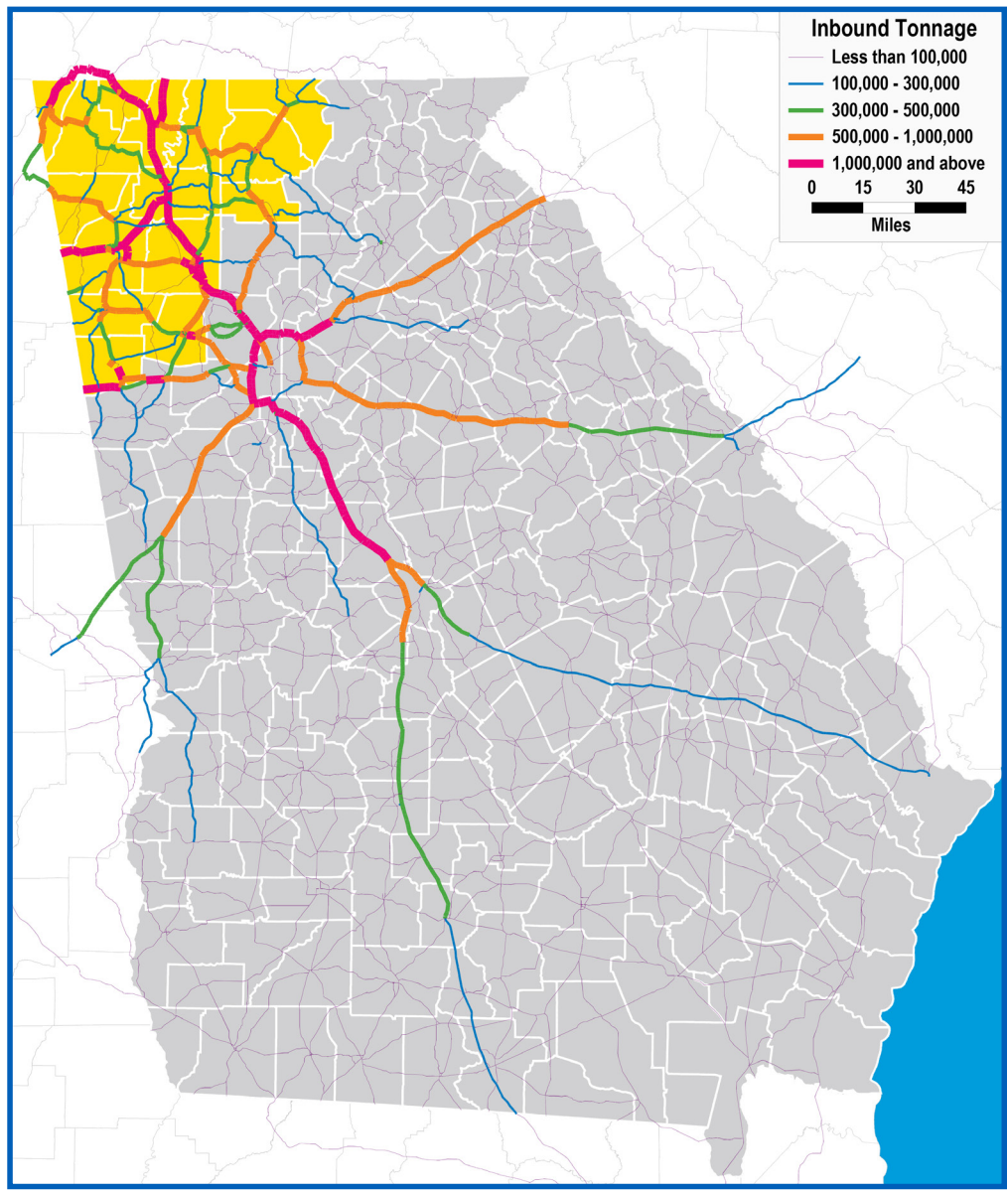
TOP 5 COMMODITIES BY VALUE

2019 INBOUND

- 1) Yarn: \$1,238,111,949
- 2) Petroleum Refining Products: \$811,356,618
- 3) Live Poultry: \$686,358,494
- 4) Motor Vehicles: \$651,931,560
- 5) Man-made or Glass Woven Fibre: \$623,421,892

2050 PROJECTED INBOUND

- 1) Misc Waste or Scrap: \$2,076,430,100
- 2) Live Poultry: \$2,030,549,971
- 3) Man-made or Glass Woven Fibre: \$1,680,541,217
- 4) Misc Fabricated Products: \$1,501,541,114
- 5) Yarn: \$1,145,742,167



Data source: IHS 2019. Inbound road data reflects North American freight terminating within [the State of Georgia / region X]. Outbound road data reflects North American freight originating within [the State of Georgia /region X].

REGION 1-NORTHWEST GEORGIA

Bartow • Catoosa • Chattooga • Dade • Fannin
Floyd • Gilmer • Gordon • Haralson • Murray
Paulding • Pickens • Polk • Walker • Whitfield

GEORGIA ROAD FREIGHT

OUTBOUND TRUCK FREIGHT

TRUCK INBOUND TONS: 21,507,092
TRUCK INBOUND VOLUME: 1,970,665
TRUCK INBOUND VALUE: \$28,932,456,757

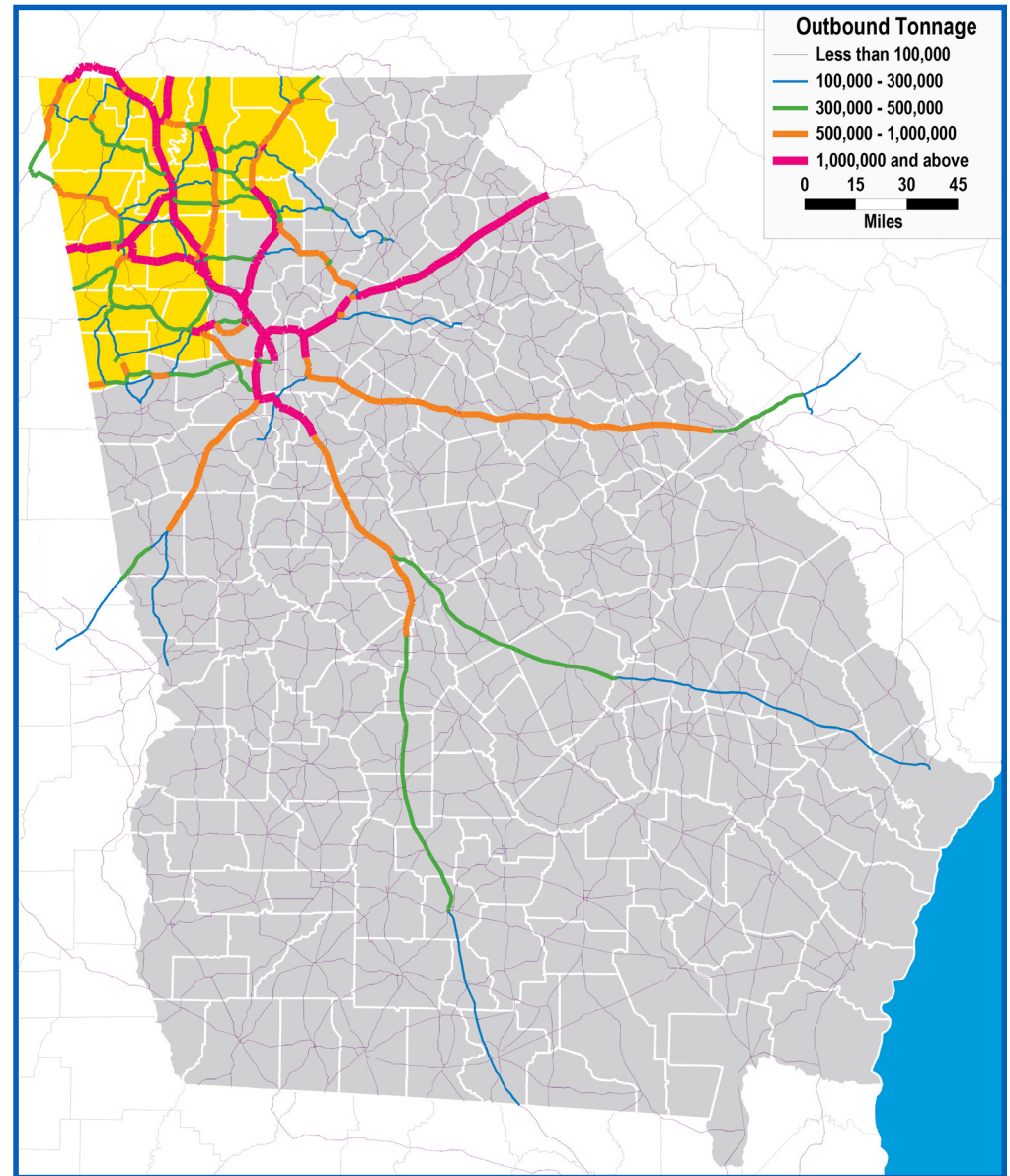
TOP 5 COMMODITIES BY VALUE

2019 OUTBOUND

1) Woven Carpets,mats or Rugs: \$3,458,315,956
2) Live Poultry: \$2,393,442,155
3) Tufted Carpets,rugs or Mats: \$2,112,734,254
4) Yarn: \$1,420,074,445
5) Carpets,mats or Rugs, Nec: \$1,285,674,638

2050 PROJECTED OUTBOUND

1) Live Poultry: \$8,874,828,451
2) Woven Carpets,mats or Rugs: \$5,299,613,575
3) Plastic Mater or Synth Fibres: \$4,473,308,338
4) Tufted Carpets,rugs or Mats: \$4,186,095,308
5) Motor Vehicle Parts or Accessories: \$2,064,562,453



Data source: IHS 2019. Inbound road data reflects North American freight terminating within [the State of Georgia / region X]. Outbound road data reflects North American freight originating within [the State of Georgia /region X].

REGION 1-NORTHWEST GEORGIA

Bartow • Catoosa • Chattooga • Dade • Fannin
Floyd • Gilmer • Gordon • Haralson • Murray
Paulding • Pickens • Polk • Walker • Whitfield

OCEAN FREIGHT

TOP 5 COMMODITIES BY TEU-CONTAINER VOLUME

INBOUND OCEAN FREIGHT

OCEAN IMPORT TONS: 621,003
OCEAN IMPORT VOLUME: 54,640

INBOUND

FLOOR COVER (ROLLS & TILES) & WALL COVER, PLASTICS: 33,474
NEW PNEUMATIC TIRES, OF RUBBER: 6,673
CARPETS & OTH TEXT FLOOR COVER, WOVEN, NO TUFT ETC: 4,537
CARPETS & OTH TEXTILE FLOOR COVERINGS, TUFTED: 2,158
WOVEN FAB OF SYN FIL YN, INCL MONOFIL 67 DEC ETC: 2,075
Other: 31,793

OUTBOUND

CARPETS & OTH TEXTILE FLOOR COVERINGS, TUFTED: 325
POLYMERS OF PROPYLENE OR OTHER OLEFINS, PRIM FORMS: 270
NEW PNEUMATIC TIRES, OF RUBBER: 224
WATERS, NATURAL ETC, NOT SWEETENED ETC; ICE & SNOW: 214
BEER MADE FROM MALT: 154
Other: 841

OUTBOUND OCEAN FREIGHT

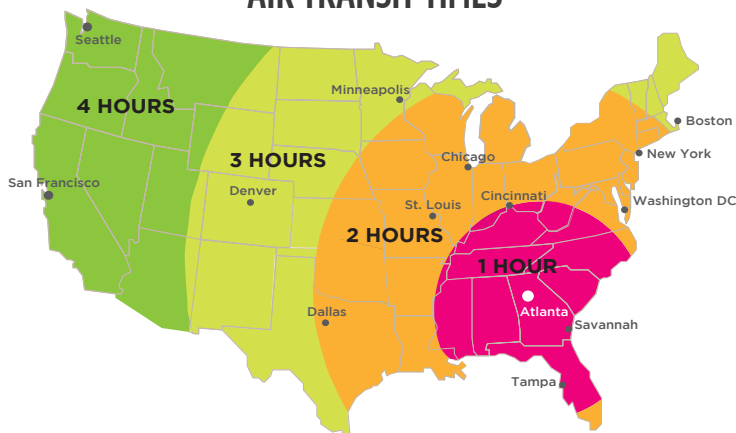
OCEAN EXPORT TONS: 17,687
OCEAN EXPORT VOLUME: 2,027

GEORGIA AIR CARGO

AIR HIGHLIGHTS

- World's busiest passenger airport, with 2,500 arrivals and departures and 250,000 passengers per day
- Over 80% of U.S. consumers are within a 2-hour flight time from Atlanta
- Foreign Trade Zone #26 is directly connected to the airport, and is a U.S. Fish and Wildlife port of entry
- ATL handles 95% of the state's annual air freight volume
- In 2021, 13th largest airport in the U.S. for cargo, and 43rd in the world
- Is the only air cargo perishable complex in the Southeast approved by the USDA to offer on-site cold treatment and fumigation treatment of fruit fly host plants

AIR TRANSIT TIMES



GEORGIA RAIL FREIGHT

RAIL HIGHLIGHTS

- Georgia is home to 28 freight railroads (2 class-1s and 26 short-line railroads)
- Home to the largest intermodal facility on the East Coast
- Georgia has the largest railroad network in the Southeast, with over 4,600 miles of track
- Rail transport directly employs over 6,500 Georgians
- Georgia railroads move 190 million tons of freight in Georgia annually

REGION 1-NORTHWEST GEORGIA WAREHOUSING & DISTRIBUTION

See map of regional locations

EDUCATION

TOP SCHOOLS WITH LOGISTICS PROGRAMS

- Dalton State College
- Georgia Highlands College
- Georgia Northwestern Technical College

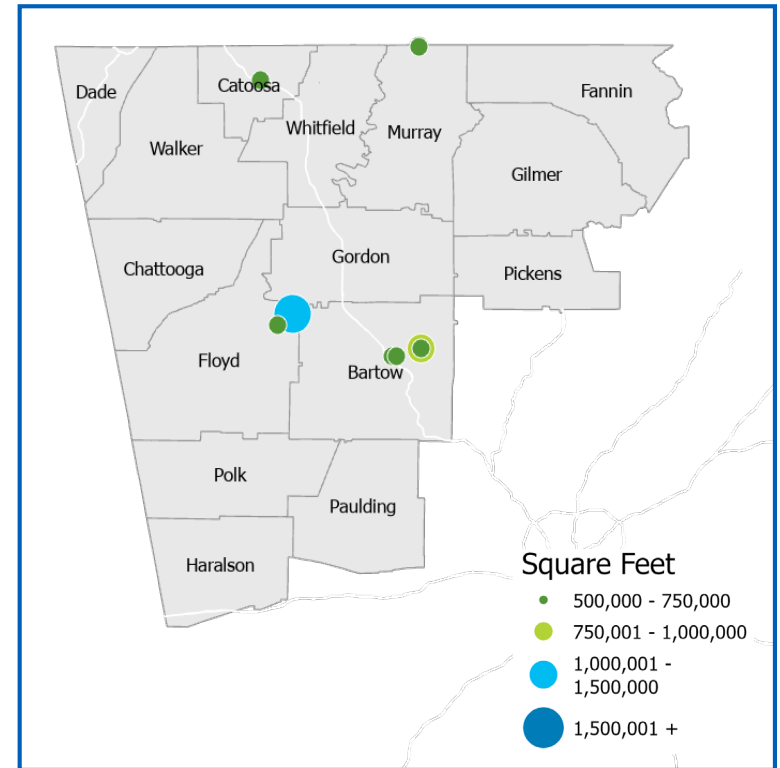
REGION CONTACT

Tamara Brock, Regional Project Manager – tbrock@georgia.org

GEORGIA DEPARTMENT OF ECONOMIC DEVELOPMENT CONTACTS

- Bob Kosek, Division Director for Global Commerce, bkosek@georgia.org
- Mary Waters, Deputy Commissioner for International Trade, mwaters@georgia.org
- Lindsay Martin, Director of Entrepreneur & Small Business lmartin@georgia.org
- Sandy Lake, Director, Center of Innovation - Logistics, slake@georgia.org

The Georgia Center of Innovation's logistics team links companies to the state's world-class logistics industry to improve supply chain efficiencies, support growth, and increase global competitiveness. Companies that need logistics help as well as logistics companies that focus on freight transportation, warehousing and distribution, and logistics technology can tap into our team of experts who have experience in the industry and can navigate you to smart solutions and helpful resources.



Source: Georgia Power Community & Economic Development