

REGION 10-SOUTHWEST GEORGIA

Baker • Calhoun • Colquitt • Decatur • Dougherty
 Early • Grady • Lee • Miller • Mitchell • Seminole
 Terrell • Thomas • Worth

GEORGIA ROAD FREIGHT

TOTAL ROADWAY MILES

8,688 (State and County Miles) **1,455** (Total City Streets)

INBOUND TRUCK FREIGHT

TRUCK INBOUND TONS: 7,665,955
 TRUCK INBOUND VOLUME: 961,249
 TRUCK INBOUND VALUE: \$5,640,173,611

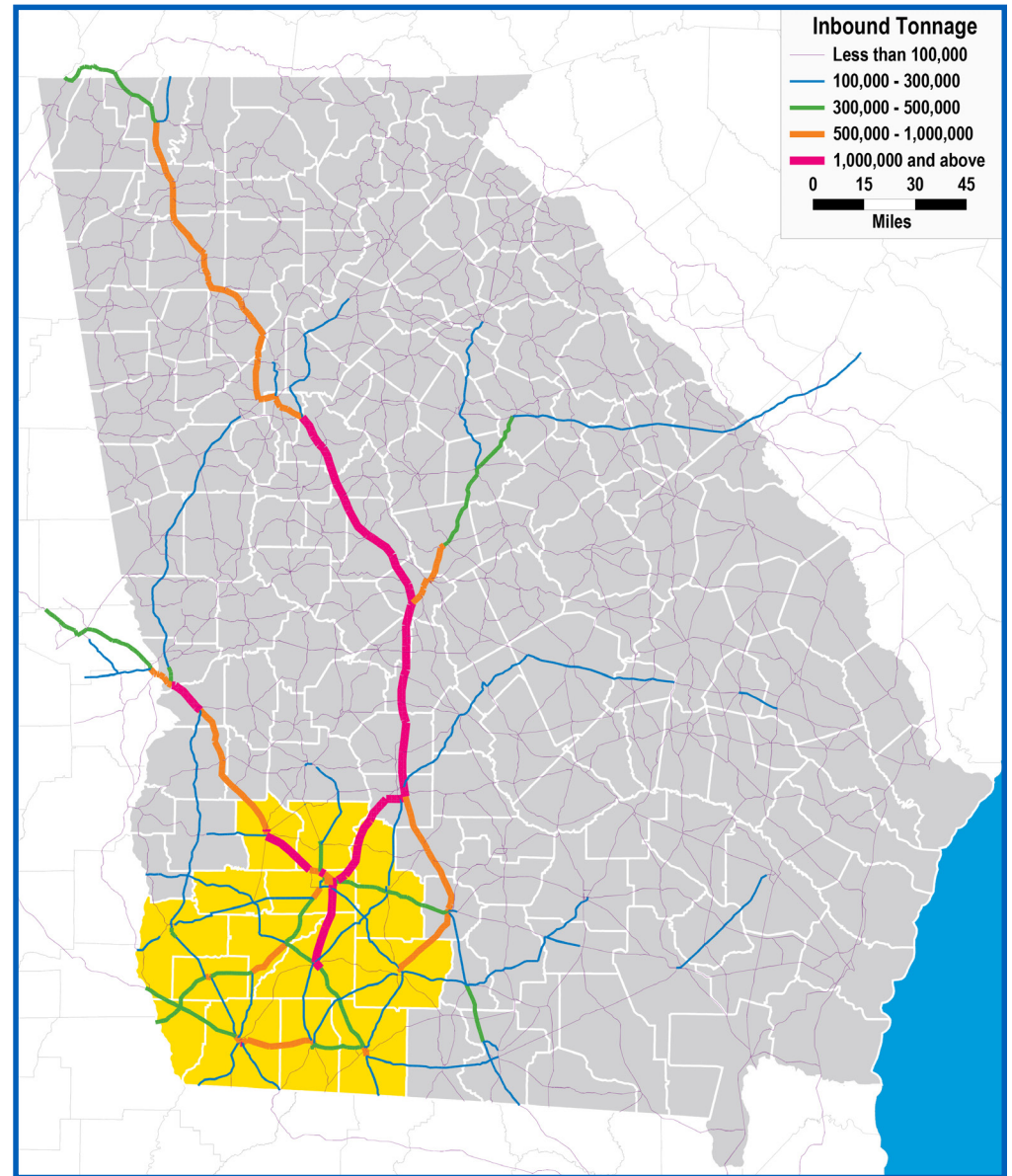
TOP 5 COMMODITIES BY VALUE

2019 INBOUND

1) Live Poultry: \$728,393,510
 2) Petroleum Refining Products: \$345,768,519
 3) Motor Vehicles: \$282,942,499
 4) Oil Kernels, Nuts or Seeds: \$246,938,801
 5) Processed Poultry or Eggs: \$206,875,915

2050 PROJECTED INBOUND

1) Live Poultry: \$2,349,364,942
 2) Processed Poultry or Eggs: \$610,941,844
 3) Motor Vehicles: \$552,848,761
 4) Dressed Poultry, Fresh: \$390,856,755
 5) Oil Kernels, Nuts or Seeds: \$323,350,414



Data source: IHS 2019. Inbound road data reflects North American freight terminating within [the State of Georgia / region X]. Outbound road data reflects North American freight originating within [the State of Georgia /region X].

REGION 10-SOUTHWEST GEORGIA

Baker • Calhoun • Colquitt • Decatur • Dougherty
 Early • Grady • Lee • Miller • Mitchell • Seminole
 Terrell • Thomas • Worth

GEORGIA ROAD FREIGHT

OUTBOUND TRUCK FREIGHT

TRUCK INBOUND TONS: 13,241,408
 TRUCK INBOUND VOLUME: 981,962
 TRUCK INBOUND VALUE: \$11,177,844,871

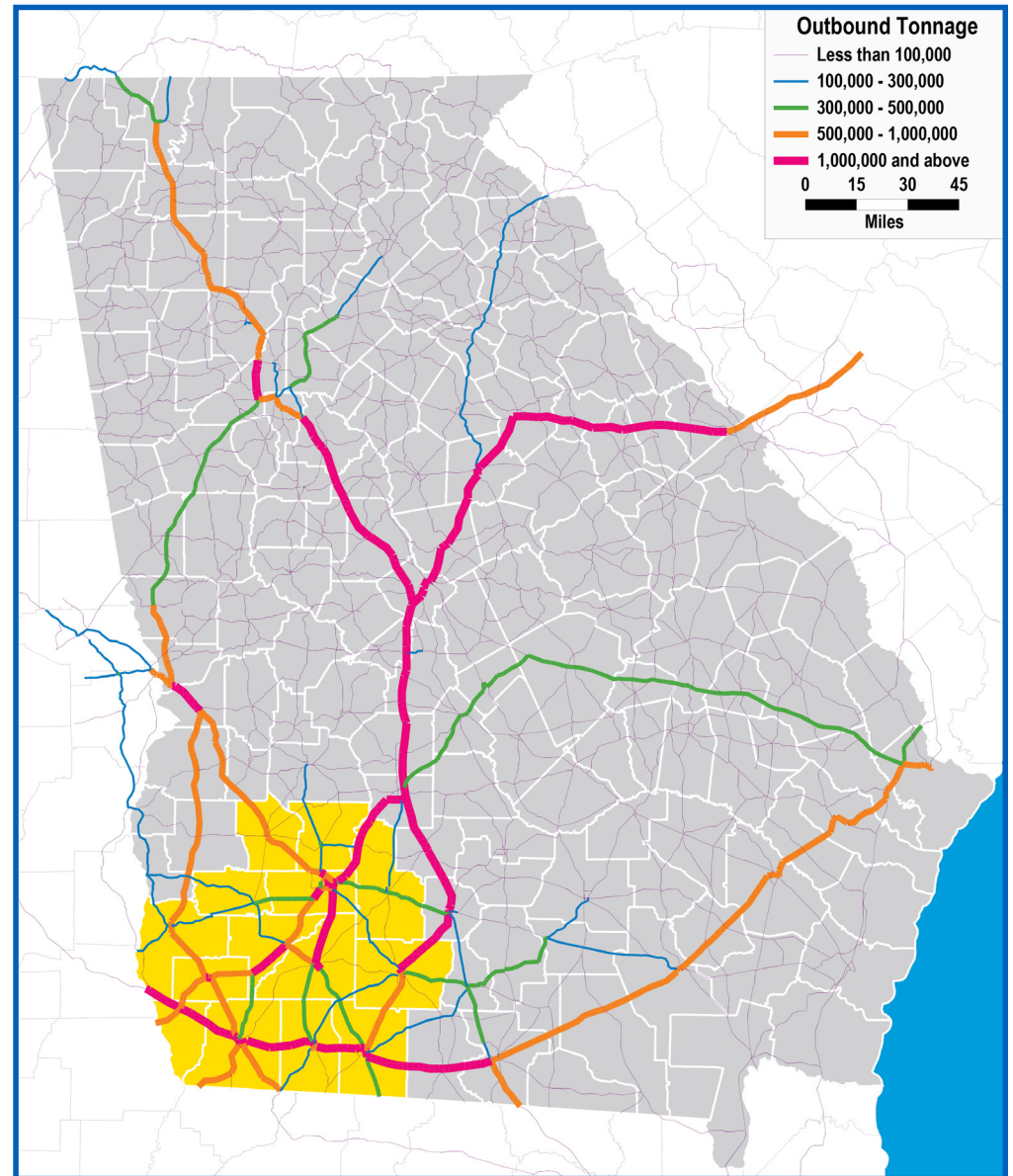
TOP 5 COMMODITIES BY VALUE

2019 OUTBOUND

1) Petroleum Refining Products: \$1,673,199,835
 2) Oil Kernels, Nuts or Seeds: \$944,656,339
 3) Processed Poultry or Eggs: \$917,401,210
 4) Misc Fresh Vegetables: \$634,425,923
 5) Dressed Poultry, Fresh: \$554,182,769

2050 PROJECTED OUTBOUND

1) Live Poultry: \$1,657,744,359
 2) Processed Fish Products: \$1,526,863,947
 3) Petroleum Refining Products: \$1,432,508,412
 4) Oil Kernels, Nuts or Seeds: \$1,309,898,081
 5) Dressed Poultry, Fresh: \$951,098,005



Data source: IHS 2019. Inbound road data reflects North American freight terminating within [the State of Georgia / region X]. Outbound road data reflects North American freight originating within [the State of Georgia /region X].

REGION 10-SOUTHWEST GEORGIA

Baker • Calhoun • Colquitt • Decatur • Dougherty
 Early • Grady • Lee • Miller • Mitchell • Seminole
 Terrell • Thomas • Worth

OCEAN FREIGHT

TOP 5 COMMODITIES BY TEU-CONTAINER VOLUME

INBOUND OCEAN FREIGHT

OCEAN IMPORT TONS: 23,024
 OCEAN IMPORT VOLUME: 743

INBOUND

PREPARATIONS USED IN ANIMAL FEEDING: 81
 WOOD SAWN OR CHIPPED LENGTH, SLICED ETC, OV6MM TH: 56
 FURNITURE NESOI AND PARTS THEREOF: 55
 TOYS NESOI; SCALE MODELS ETC; PUZZLES; PARTS ETC: 38
 POLYETHERS, EXPOXIDES & POLYESTERS, PRIMARY FORMS: 36
 Other: 477

OUTBOUND

PEANUTS (GROUND-NUTS), RAW: 1,181
 FRUIT, NUTS ETC PREPARED OR PRESERVED NESOI: 405
 NUTS NESOI, FRESH OR DRIED: 39
 PEANUT OIL & ITS FRACTIONS, NOT CHEMICALLY MODIFIED: 28
 UBRICATING PREPS, ANTIRUST & TREATING TEXILES ETC: 26
 Other: 39

OUTBOUND OCEAN FREIGHT

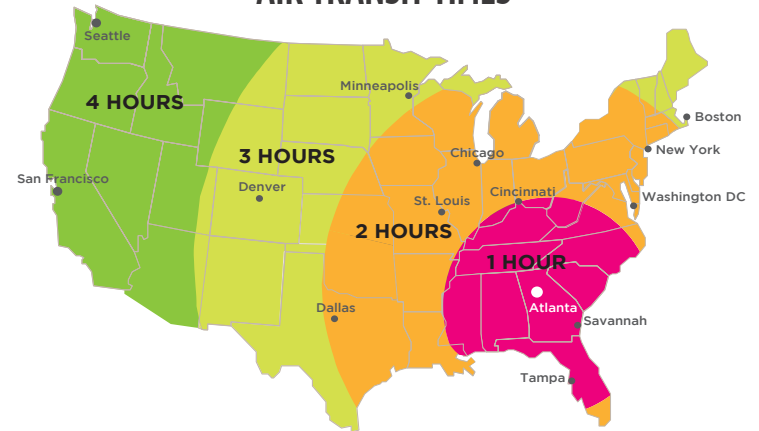
OCEAN EXPORT TONS: 19,142
 OCEAN EXPORT VOLUME: 1,718

GEORGIA AIR CARGO

AIR HIGHLIGHTS

- World’s busiest passenger airport, with 2,500 arrivals and departures and 250,000 passengers per day
- Over 80% of U.S. consumers are within a 2-hour flight time from Atlanta
- Foreign Trade Zone #26 is directly connected to the airport, and is a U.S. Fish and Wildlife port of entry
- ATL handles 95% of the state’s annual air freight volume
- In 2021, 13th largest airport in the U.S. for cargo, and 43rd in the world
- Is the only air cargo perishable complex in the Southeast approved by the USDA to offer on-site cold treatment and fumigation treatment of fruit fly host plants

AIR TRANSIT TIMES



GEORGIA RAIL FREIGHT

RAIL HIGHLIGHTS

- Georgia is home to 28 freight railroads (2 class-1s and 26 short-line railroads)
- Home to the largest intermodal facility on the East Coast
- Georgia has the largest railroad network in the Southeast, with over 4,600 miles of track
- Rail transport directly employs over 6,500 Georgians
- Georgia railroads move 190 million tons of freight in Georgia annually



REGION 10-SOUTHWEST GEORGIA WAREHOUSING & DISTRIBUTION

See map of regional locations

EDUCATION

Top Schools with Logistics Programs

- Albany State University
- Albany Technical College
- Southern Regional Technical College

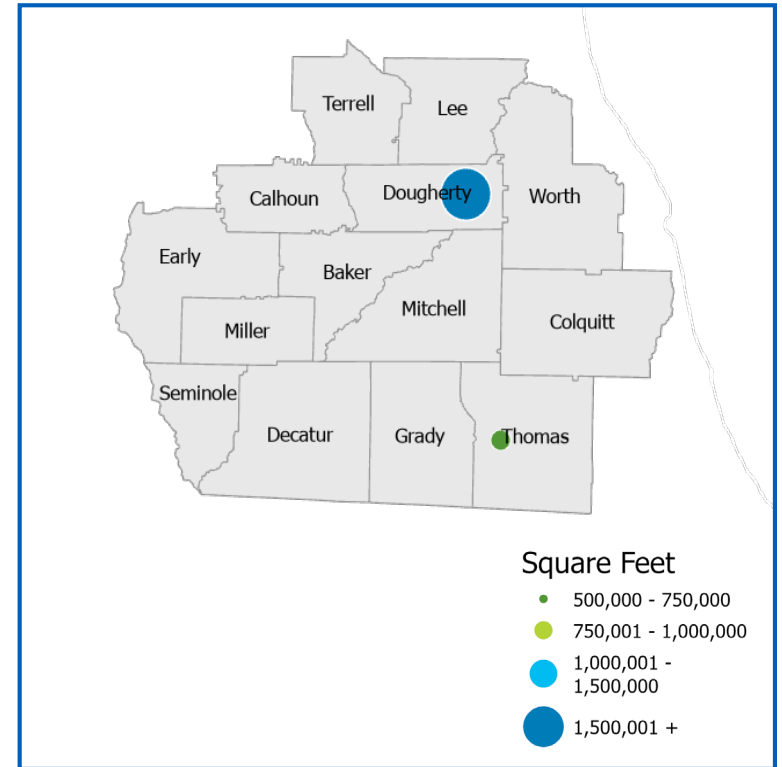
REGION CONTACT

Tina Herring, Sr. Regional Project Manager – therring@georgia.org

GEORGIA DEPARTMENT OF ECONOMIC DEVELOPMENT CONTACTS

- Bob Kosek, Division Director for Global Commerce, bkosek@georgia.org
- Mary Waters, Deputy Commissioner for International Trade, mwaters@georgia.org
- Lindsay Martin, Director of Entrepreneur & Small Business lmartin@georgia.org
- Sandy Lake, Director, Center of Innovation - Logistics, slake@georgia.org

The Georgia Center of Innovation’s logistics team links companies to the state’s world-class logistics industry to improve supply chain efficiencies, support growth, and increase global competitiveness. Companies that need logistics help as well as logistics companies that focus on freight transportation, warehousing and distribution, and logistics technology can tap into our team of experts who have experience in the industry and can navigate you to smart solutions and helpful resources.



Source: Georgia Power Community & Economic Development