

REGION 11-SOUTHEAST GEORGIA

Atkinson • Bacon • Ben Hill • Berrien • Brantley • Brooks
Charlton • Clinch • Coffee • Cook • Echols • Irwin
Lanier • Lowndes • Pierce • Tift • Turner • Ware

GEORGIA ROAD FREIGHT

TOTAL ROADWAY MILES

10,978 **1,486**
(State and County Miles) (Total City Streets)

INBOUND TRUCK FREIGHT

TRUCK INBOUND TONS: 7,763,078
TRUCK INBOUND VOLUME: 794,932
TRUCK INBOUND VALUE: \$6,400,905,427

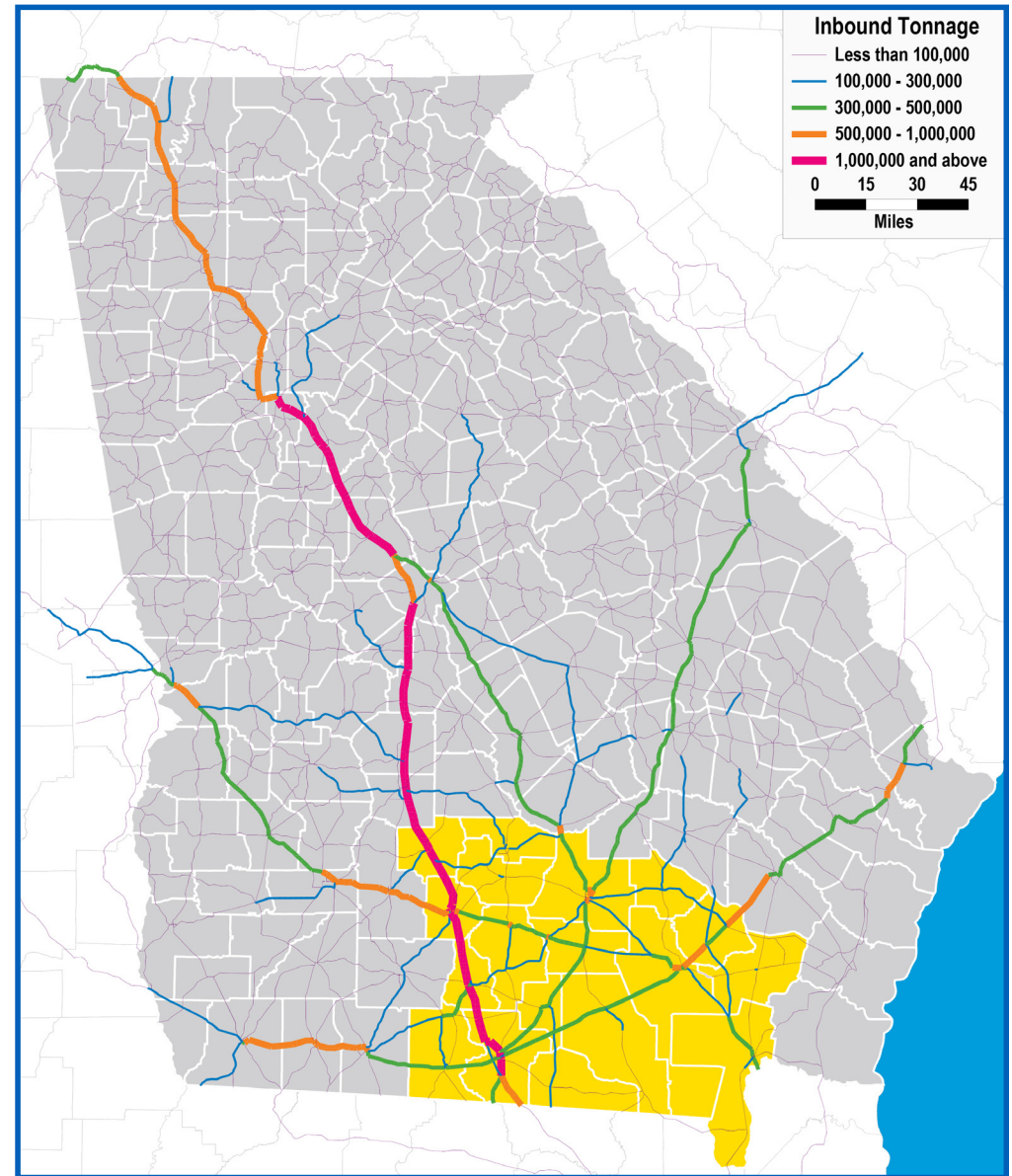
TOP 5 COMMODITIES BY VALUE

2019 INBOUND

1) Petroleum Refining Products: \$441,576,222
2) Motor Vehicles: \$348,059,794
3) Oil Kernels, Nuts or Seeds: \$285,192,295
4) Live Poultry: \$270,683,077
5) Motor Vehicle Parts or Accessories: \$260,094,706

2050 PROJECTED INBOUND

1) Live Poultry: \$868,103,422
2) Motor Vehicles: \$661,091,009
3) Steam Engines, Turbines, Etc.: \$461,068,715
4) Motor Vehicle Parts or Accessories: \$435,493,689
5) Oil Kernels, Nuts or Seeds: \$383,891,868



Data source: IHS 2019. Inbound road data reflects North American freight terminating within [the State of Georgia / region X]. Outbound road data reflects North American freight originating within [the State of Georgia /region X].

REGION 11-SOUTHEAST GEORGIA

Atkinson • Bacon • Ben Hill • Berrien • Brantley • Brooks
Charlton • Clinch • Coffee • Cook • Echols • Irwin
Lanier • Lowndes • Pierce • Tift • Turner • Ware

GEORGIA ROAD FREIGHT

OUTBOUND TRUCK FREIGHT

TRUCK INBOUND TONS: 9,748,340
TRUCK INBOUND VOLUME: 795,874
TRUCK INBOUND VALUE: \$9,109,831,305

TOP 5 COMMODITIES

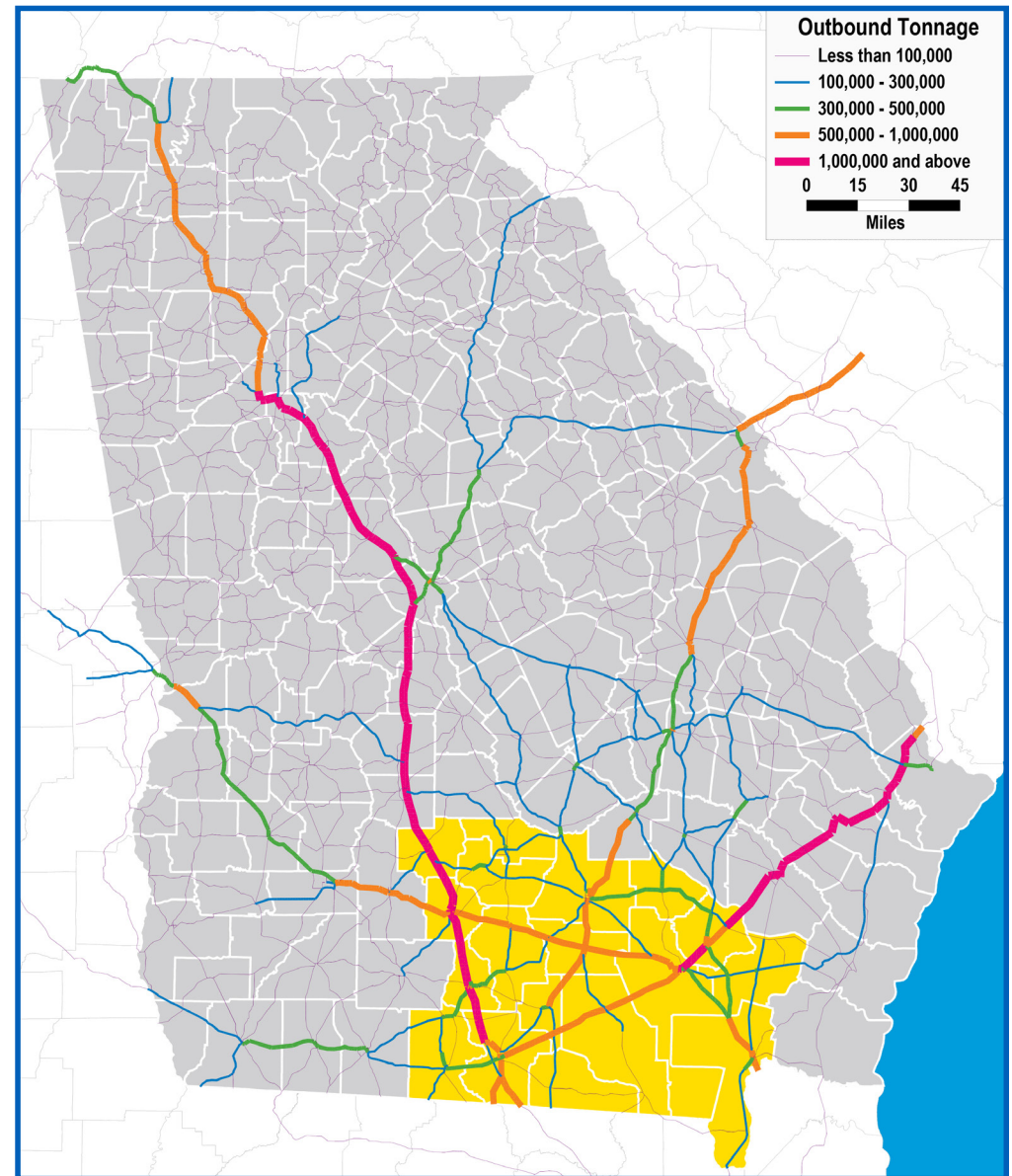
BY VALUE

2019 OUTBOUND

1) Misc Fresh Vegetables: \$564,452,914
2) Oil Kernels, Nuts or Seeds: \$506,980,336
3) Misc Sawmill or Planing Mill: \$459,354,910
4) Live Poultry: \$396,030,387
5) Primary Forest Materials: \$307,721,111

2050 PROJECTED OUTBOUND

1) Live Poultry: \$1,198,946,998
2) Processed Poultry or Eggs: \$1,184,991,306
3) Dressed Poultry, Fresh: \$896,687,314
4) Misc Fresh Vegetables: \$802,857,804
5) Misc Food Preparations, Nec: \$710,760,290



Data source: IHS 2019. Inbound road data reflects North American freight terminating within [the State of Georgia / region X]. Outbound road data reflects North American freight originating within [the State of Georgia /region X].

REGION 11-SOUTHEAST GEORGIA

Atkinson • Bacon • Ben Hill • Berrien • Brantley • Brooks
Charlton • Clinch • Coffee • Cook • Echols • Irwin
Lanier • Lowndes • Pierce • Tift • Turner • Ware

OCEAN FREIGHT

TOP 5 COMMODITIES BY TEU-CONTAINER VOLUME

INBOUND OCEAN FREIGHT

OCEAN IMPORT TONS: 15,186
OCEAN IMPORT VOLUME: 1,415

INBOUND

FRUIT & NUTS (RAW OR COOKED BY STEAM ETC), FROZEN: 302
WOVEN FAB OF SYN FIL YN, INCL MONOFIL 67 DEC ETC: 215
POLYETHERS, EXPOXIDES & POLYESTERS, PRIMARY FORMS: 100
PLATES, SHEETS, FILM, FOIL & STRIP NESOI, PLASTICS: 94
FURNITURE NESOI AND PARTS THEREOF: 66
Other: 639

OUTBOUND

FRUIT DRIED NESOI; MIXTURES OF NUTS OR DRIED FRUIT: 12
WOMEN'S OR GIRLS' OVERCOATS ETC, NOT KNIT OR CROCH: 8
FURNITURE NESOI AND PARTS THEREOF: 4
NEW PNEUMATIC TIRES, OF RUBBER: 2
INTERCHANGE TOOLS FOR HAND- OR MACHINE-TOOLS, BMPT: 2
Other: 18

OUTBOUND OCEAN FREIGHT

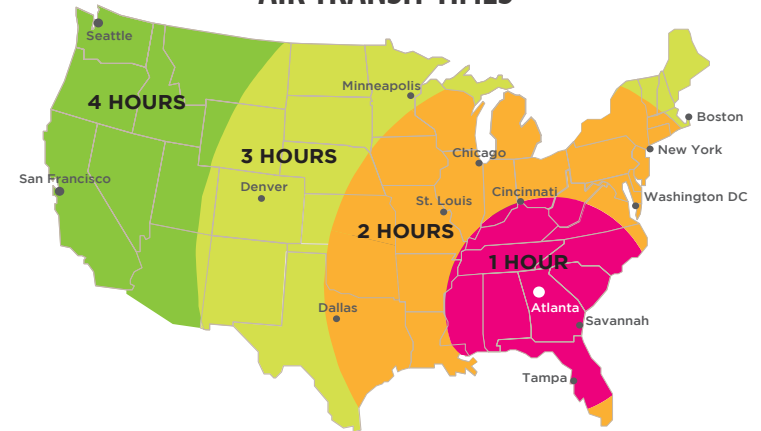
OCEAN EXPORT TONS: 298
OCEAN EXPORT VOLUME: 46

GEORGIA AIR CARGO

AIR HIGHLIGHTS

- World's busiest passenger airport, with 2,500 arrivals and departures and 250,000 passengers per day
- Over 80% of U.S. consumers are within a 2-hour flight time from Atlanta
- Foreign Trade Zone #26 is directly connected to the airport, and is a U.S. Fish and Wildlife port of entry
- ATL handles 95% of the state's annual air freight volume
- In 2021, 13th largest airport in the U.S. for cargo, and 43rd in the world
- Is the only air cargo perishable complex in the Southeast approved by the USDA to offer on-site cold treatment and fumigation treatment of fruit fly host plants

AIR TRANSIT TIMES



GEORGIA RAIL FREIGHT

RAIL HIGHLIGHTS

- Georgia is home to 28 freight railroads (2 class-1s and 26 short-line railroads)
- Home to the largest intermodal facility on the East Coast
- Georgia has the largest railroad network in the Southeast, with over 4,600 miles of track
- Rail transport directly employs over 6,500 Georgians
- Georgia railroads move 190 million tons of freight in Georgia annually

REGION 11-SOUTHEAST GEORGIA WAREHOUSING & DISTRIBUTION

See map of regional locations

EDUCATION

Top Schools with Logistics Programs

- Abraham Baldwin Agricultural College
- Coastal Pines Technical College
- Valdosta State University
- Wiregrass Georgia Technical College

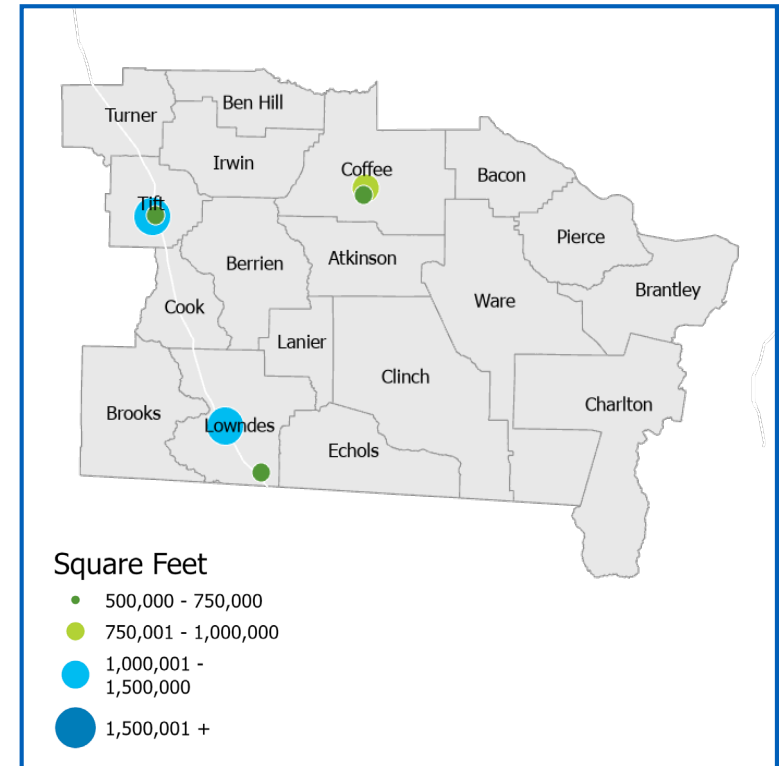
REGION CONTACT

Elizabeth McLean, Regional Project Manager – emclean@georgia.org

GEORGIA DEPARTMENT OF ECONOMIC DEVELOPMENT CONTACTS

- Bob Kosek, Division Director for Global Commerce, bkosek@georgia.org
- Mary Waters, Deputy Commissioner for International Trade, mwaters@georgia.org
- Lindsay Martin, Director of Entrepreneur & Small Business lmartin@georgia.org
- Sandy Lake, Director, Center of Innovation - Logistics, slake@georgia.org

The Georgia Center of Innovation's logistics team links companies to the state's world-class logistics industry to improve supply chain efficiencies, support growth, and increase global competitiveness. Companies that need logistics help as well as logistics companies that focus on freight transportation, warehousing and distribution, and logistics technology can tap into our team of experts who have experience in the industry and can navigate you to smart solutions and helpful resources.



Source: Georgia Power Community & Economic Development