

REGION 4-WEST CENTRAL GEORGIA

Butts • Carroll • Coweta • Heard • Lamar
Meriwether • Pike • Spalding • Troup • Upson

GEORGIA ROAD FREIGHT

TOTAL ROADWAY MILES

6,541 **1,271**
(State and County Miles) (Total City Streets)

INBOUND TRUCK FREIGHT

TRUCK INBOUND TONS: 8,478,136
TRUCK INBOUND VOLUME: 785,322
TRUCK INBOUND VALUE: \$7,055,853,503

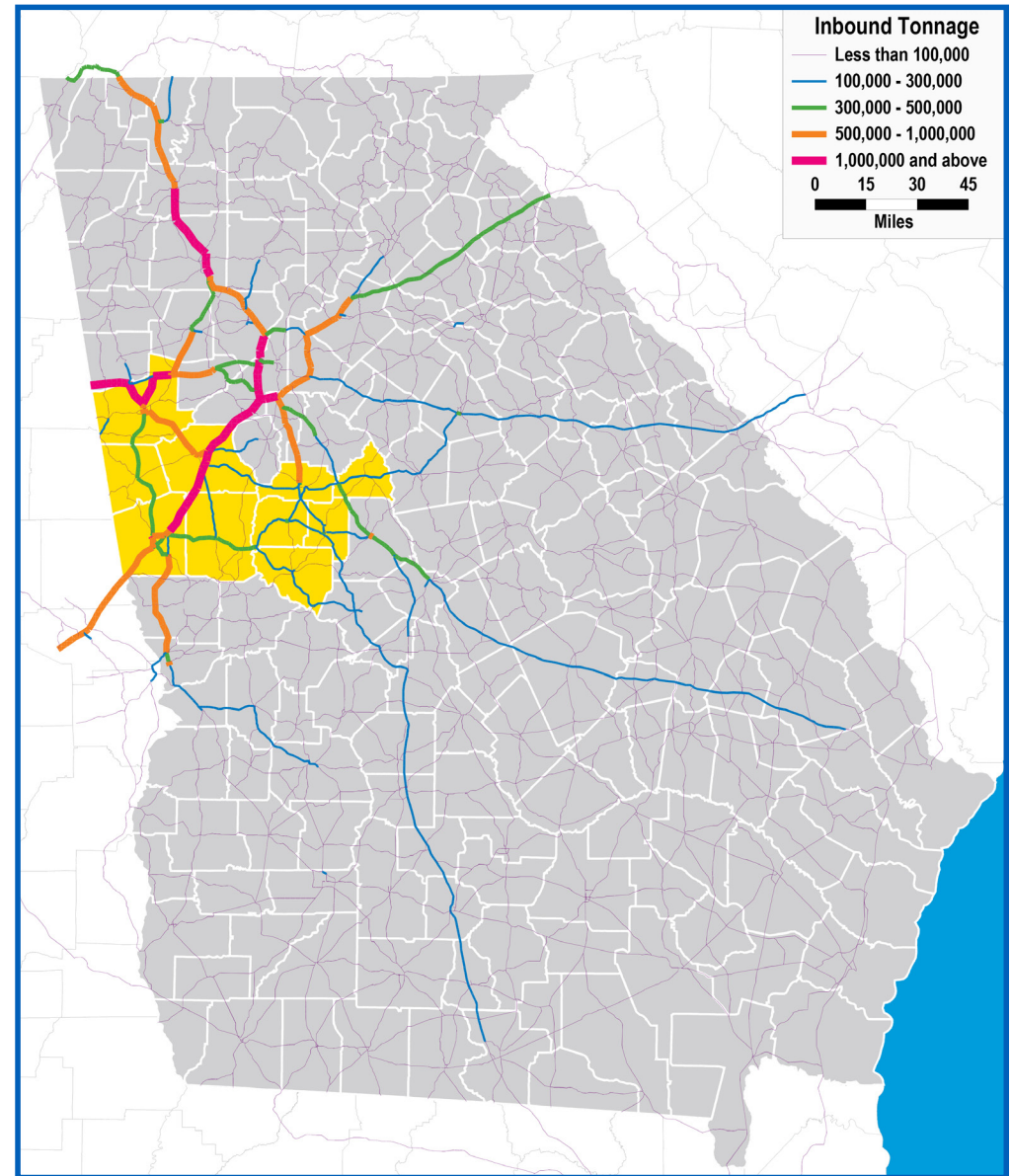
TOP 5 COMMODITIES BY VALUE

2019 INBOUND

1) Motor Vehicle Parts or Accessories: \$707,386,266
2) Motor Vehicles: \$600,652,154
3) Petroleum Refining Products: \$505,595,536
4) Live Poultry: \$280,644,832
5) Primary Iron or Steel Products: \$185,251,438

2050 PROJECTED INBOUND

1) Motor Vehicles: \$882,231,212
2) Motor Vehicle Parts or Accessories: \$864,237,721
3) Live Poultry: \$835,360,928
4) Petroleum Refining Products: \$420,774,661
5) Misc Waste or Scrap: \$294,231,767



Data source: IHS 2019. Inbound road data reflects North American freight terminating within [the State of Georgia / region X]. Outbound road data reflects North American freight originating within [the State of Georgia /region X].

REGION 4-WEST CENTRAL GEORGIA

Butts • Carroll • Coweta • Heard • Lamar
Meriwether • Pike • Spalding • Troup • Upson

GEORGIA ROAD FREIGHT

OUTBOUND TRUCK FREIGHT

TRUCK INBOUND TONS:	8,154,326
TRUCK INBOUND VOLUME:	811,079
TRUCK INBOUND VALUE:	\$15,097,084,167

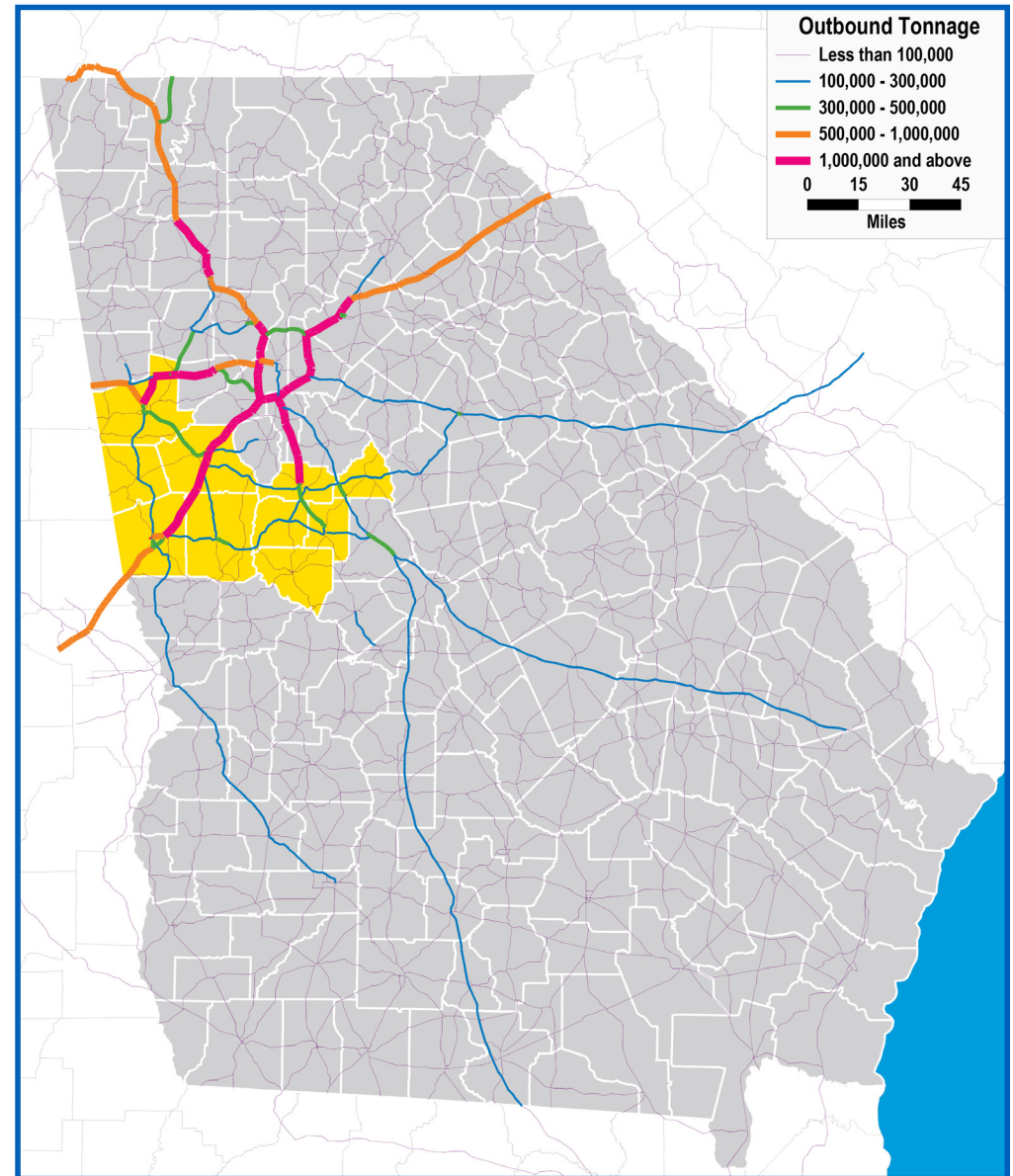
TOP 5 COMMODITIES BY VALUE

2019 OUTBOUND

1) Motor Vehicles:	\$2,785,036,585
2) Motor Vehicle Parts or Accessories:	\$1,898,192,575
3) Transportation Equipment, Nec:	\$1,435,052,296
4) Telephone or Telegraph Equipment:	\$819,590,815
5) Misc Plastic Products:	\$648,151,998

2050 PROJECTED OUTBOUND

1) Motor Vehicles:	\$4,601,332,201
2) Live Poultry:	\$2,354,011,543
3) Motor Vehicle Parts or Accessories:	\$2,227,350,079
4) Transportation Equipment, Nec:	\$1,885,980,334
5) Telephone or Telegraph Equipment:	\$1,356,184,349



Data source: IHS 2019. Inbound road data reflects North American freight terminating within [the State of Georgia / region X]. Outbound road data reflects North American freight originating within [the State of Georgia /region X].

REGION 4-WEST CENTRAL GEORGIA

Butts • Carroll • Coweta • Heard • Lamar
Meriwether • Pike • Spalding • Troup • Upson

OCEAN FREIGHT

TOP 5 COMMODITIES BY TEU-CONTAINER VOLUME

INBOUND OCEAN FREIGHT

OCEAN IMPORT TONS: 293,227
OCEAN IMPORT VOLUME: 34,653

INBOUND

PARTS & ACCESS FOR MOTOR VEHICLES (HEAD 8701-8705): 14,729
MOTOR CARS & VEHICLES FOR TRANSPORTING PERSONS: 2,993
TUBES, PIPES & HOSES & THEIR FITTINGS, OF PLASTICS: 1,425
PARTS & ACCESS FOR CYCLES & INVALID CARRIAGES: 1,174
INSULATED WIRE, CABLE ETC; OPT SHEATH FIB CABLES: 1,096
Other: 13,237

OUTBOUND

ARTICLES OF IRON OR STEEL, NESOI: 186
PARTS & ACCESS FOR MOTOR VEHICLES (HEAD 8701-8705): 59
PLATES, SHEETS, FILM ETC NO AD, NON-CEL ETC, PLAST: 26
PARTS FOR ENGINES OF HEADING 8407 OR 8408: 19
MOTOR CARS & VEHICLES FOR TRANSPORTING PERSONS: 15
Other: 89

OUTBOUND OCEAN FREIGHT

OCEAN EXPORT TONS: 8,395
OCEAN EXPORT VOLUME: 392

GEORGIA AIR CARGO

AIR HIGHLIGHTS

- World's busiest passenger airport, with 2,500 arrivals and departures and 250,000 passengers per day
- Over 80% of U.S. consumers are within a 2-hour flight time from Atlanta
- Foreign Trade Zone #26 is directly connected to the airport, and is a U.S. Fish and Wildlife port of entry
- ATL handles 95% of the state's annual air freight volume
- In 2021, 13th largest airport in the U.S. for cargo, and 43rd in the world
- Is the only air cargo perishable complex in the Southeast approved by the USDA to offer on-site cold treatment and fumigation treatment of fruit fly host plants

AIR TRANSIT TIMES



GEORGIA RAIL FREIGHT

RAIL HIGHLIGHTS

- Georgia is home to 28 freight railroads (2 class-1s and 26 short-line railroads)
- Home to the largest intermodal facility on the East Coast
- Georgia has the largest railroad network in the Southeast, with over 4,600 miles of track
- Rail transport directly employs over 6,500 Georgians
- Georgia railroads move 190 million tons of freight in Georgia annually

REGION 4-WEST CENTRAL GEORGIA WAREHOUSING & DISTRIBUTION

See map of regional locations

EDUCATION

Top Schools with Logistics Programs

- Gordon State College
- Southern Crescent Technical College
- University of West Georgia
- West Georgia Technical College

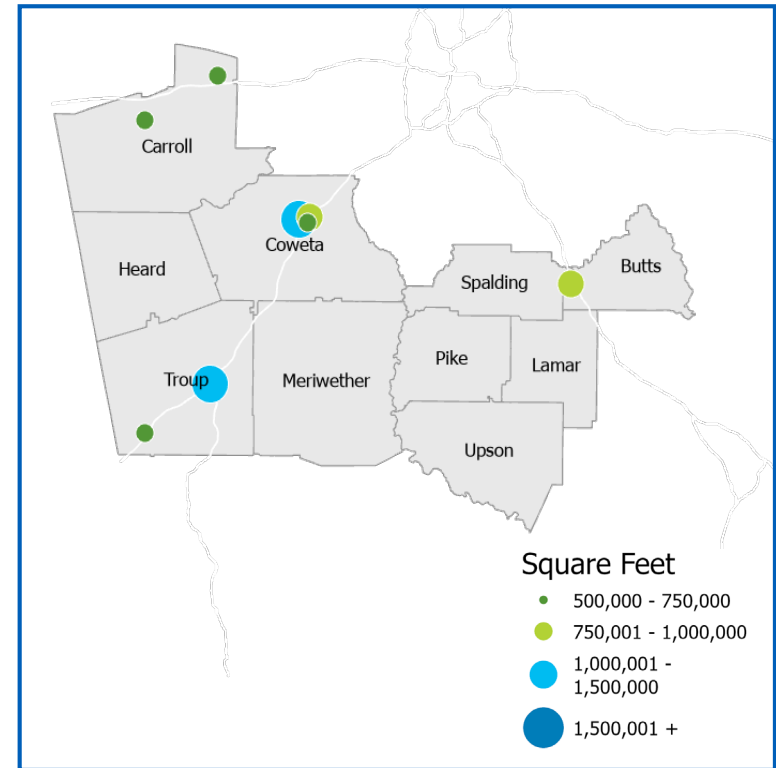
REGION CONTACT

Amanda Fields, Sr. Regional Project Manager – afields@georgia.org

GEORGIA DEPARTMENT OF ECONOMIC DEVELOPMENT CONTACTS

- Bob Kosek, Division Director for Global Commerce, bkosek@georgia.org
- Mary Waters, Deputy Commissioner for International Trade, mwaters@georgia.org
- Lindsay Martin, Director of Entrepreneur & Small Business lmartin@georgia.org
- Sandy Lake, Director, Center of Innovation - Logistics, slake@georgia.org

The Georgia Center of Innovation's logistics team links companies to the state's world-class logistics industry to improve supply chain efficiencies, support growth, and increase global competitiveness. Companies that need logistics help as well as logistics companies that focus on freight transportation, warehousing and distribution, and logistics technology can tap into our team of experts who have experience in the industry and can navigate you to smart solutions and helpful resources.



Source: Georgia Power Community & Economic Development