

# REGION 7-EAST GEORGIA

Burke • Columbia • Glascock • Hancock • Jefferson  
 Jenkins • Lincoln • McDuffie • Richmond • Taliaferro  
 Warren • Washington • Wilkes

## GEORGIA ROAD FREIGHT

**TOTAL ROADWAY MILES**  
**8,007**      **580**  
 (State and County Miles)      (Total City Streets)

### INBOUND TRUCK FREIGHT

TRUCK INBOUND TONS:                      12,625,328  
 TRUCK INBOUND VOLUME:                1,333,140  
 TRUCK INBOUND VALUE:                \$8,132,128,493

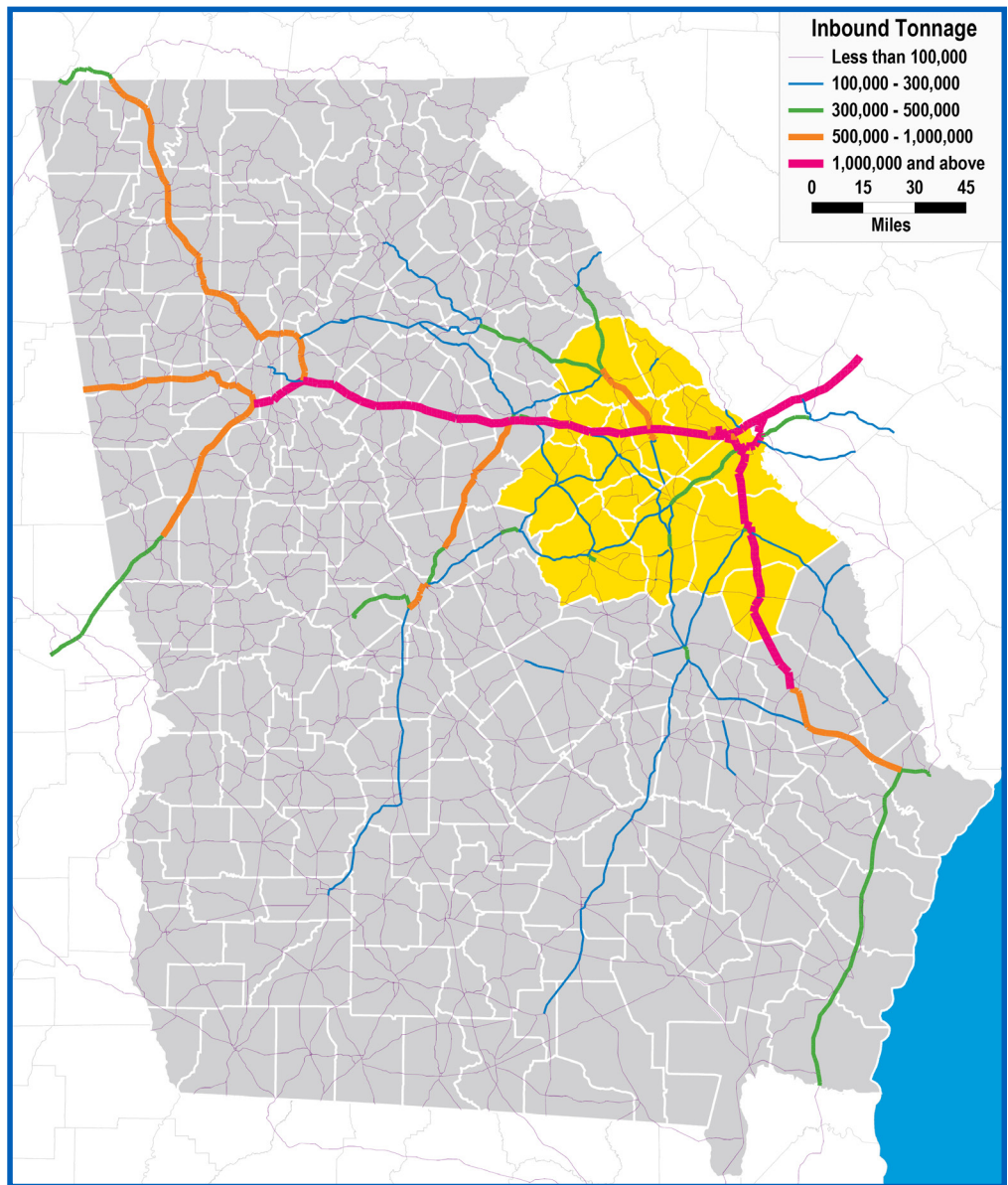
### TOP 5 COMMODITIES BY VALUE

**2019 INBOUND**

- 1) Motor Vehicle Parts or Accessories:      \$561,420,877
- 2) Petroleum Refining Products:            \$529,327,505
- 3) Motor Vehicles:                              \$475,130,492
- 4) Primary Forest Materials:                \$235,340,978
- 5) Drugs:    \$229,552,71

**2050 PROJECTED INBOUND**

- 1) Motor Vehicle Parts or Accessories:      \$835,292,608
- 2) Motor Vehicles:                              \$776,997,562
- 3) Drugs:    \$684,122,951
- 4) Petroleum Refining Products:            \$453,746,210
- 5) Misc Waste or Scrap:                      \$447,064,930



Data source: IHS 2019. Inbound road data reflects North American freight terminating within [the State of Georgia / region X]. Outbound road data reflects North American freight originating within [the State of Georgia /region X].



# REGION 7-EAST GEORGIA

Burke • Columbia • Glascock • Hancock • Jefferson  
 Jenkins • Lincoln • McDuffie • Richmond • Taliaferro  
 Warren • Washington • Wilkes

## GEORGIA ROAD FREIGHT

### OUTBOUND TRUCK FREIGHT

TRUCK INBOUND TONS:	17,292,462
TRUCK INBOUND VOLUME:	1,355,022
TRUCK INBOUND VALUE:	\$9,148,681,444

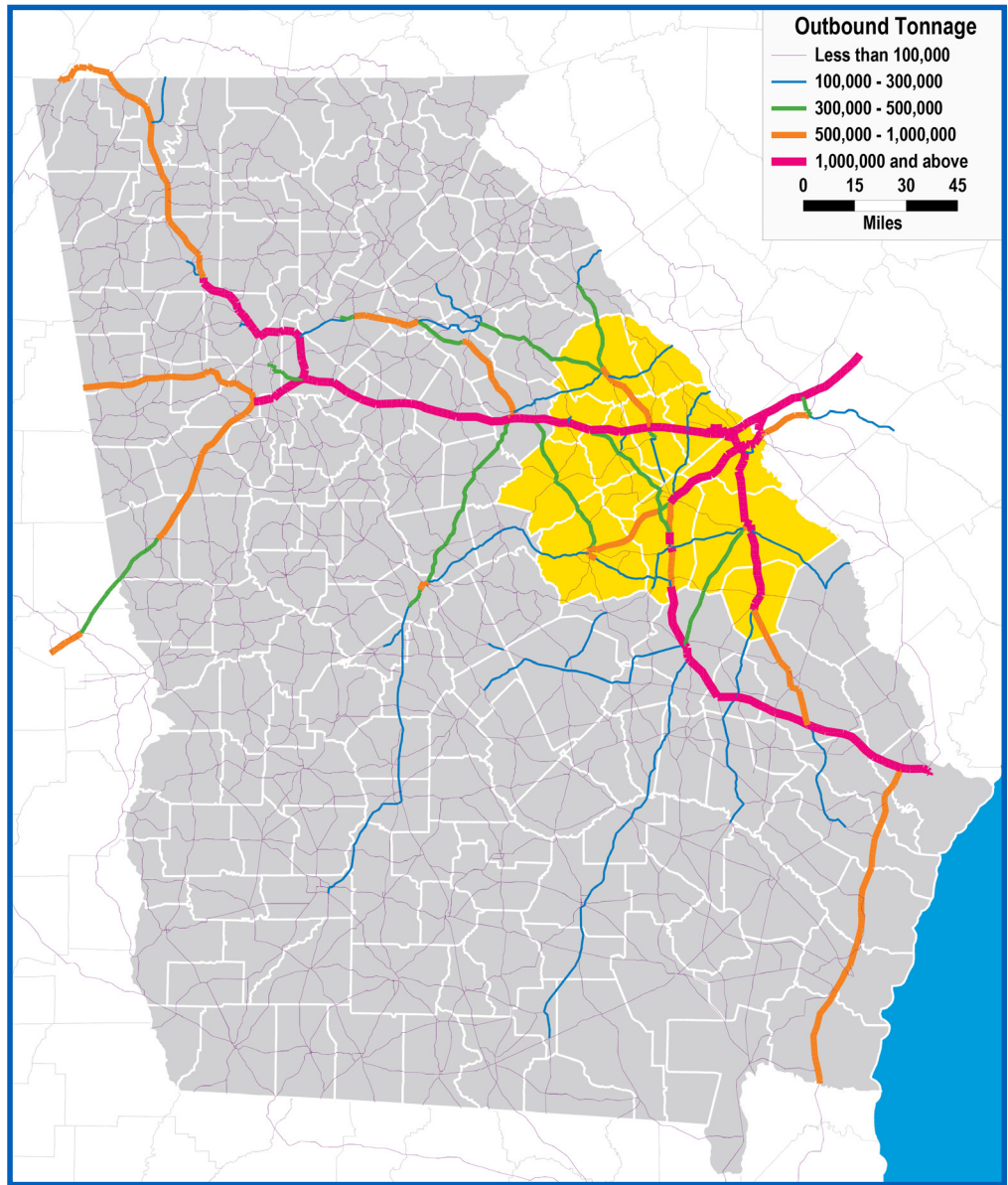
### TOP 5 COMMODITIES BY VALUE

#### 2019 OUTBOUND

1) Transportation Equipment, Nec:	\$1,005,585,865
2) Misc Sawmill or Planing Mill:	\$574,696,787
3) Fiber, Paper or Pulpboard:	\$489,067,138
4) Farm Machinery or Equipment:	\$487,116,765
5) Nonmetal Minerals, Processed:	\$426,463,865

#### 2050 PROJECTED OUTBOUND

1) Farm Machinery or Equipment:	\$2,327,453,715
2) Live Poultry:	\$1,003,245,959
3) Paper:	\$942,344,392
4) Biscuits, Crackers or Pretzles:	\$933,144,835
5) Nonmetal Minerals, Processed:	\$693,790,973



Data source: IHS 2019. Inbound road data reflects North American freight terminating within [the State of Georgia / region X]. Outbound road data reflects North American freight originating within [the State of Georgia /region X].



## REGION 7-EAST GEORGIA

Burke • Columbia • Glascock • Hancock • Jefferson  
 Jenkins • Lincoln • McDuffie • Richmond • Taliaferro  
 Warren • Washington • Wilkes

### OCEAN FREIGHT

### TOP 5 COMMODITIES BY TEU-CONTAINER VOLUME

#### INBOUND OCEAN FREIGHT

OCEAN IMPORT TONS: 76,304  
 OCEAN IMPORT VOLUME: 8,325

#### INBOUND

PARTS & ACCESS FOR MOTOR VEHICLES (HEAD 8701-8705): 1,932  
 COMPRESSION-IGNITION INTERNAL COMB PISTON ENGINES: 1,487  
 PHOSPHINATES, PHOSPHONATES, PHOSPHATES & POLYPHOSP: 1,247  
 TRACTORS (OTHER THAN WORKS TRUCKS OF HEADING 8709): 644  
 PARTS FOR MACHINERY OF HEADINGS 8425 TO 8430: 426  
 Other: 2,588

#### OUTBOUND

KAOLIN AND OTHER KAOLINIC CLAYS, INCL CALCINED: 19,468  
 MOTOR CARS & VEHICLES FOR TRANSPORTING PERSONS: 2,955  
 WOOD SAWN OR CHIPPED LENGTH, SLICED ETC, OV6MM TH: 936  
 MISCELLANEOUS CARGO: 258  
 ARTIFICIAL GRAPHITE; COLLOIDAL GRAPHITE & PREP ETC: 118  
 Other: 867

#### OUTBOUND OCEAN FREIGHT

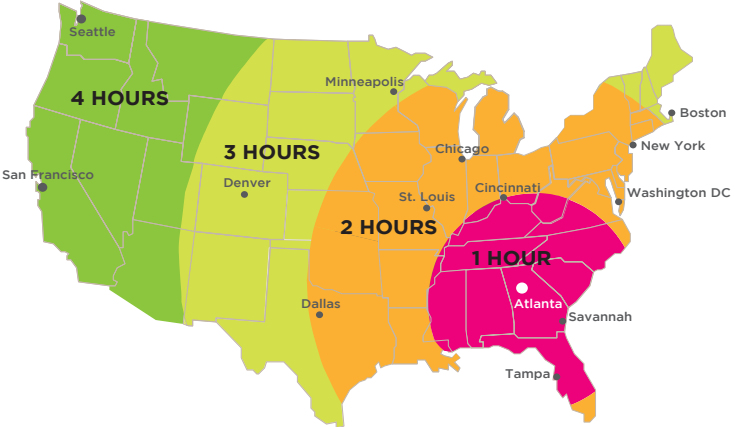
OCEAN EXPORT TONS: 366,601  
 OCEAN EXPORT VOLUME: 24,602

## GEORGIA AIR CARGO

### AIR HIGHLIGHTS

- World's busiest passenger airport, with 2,500 arrivals and departures and 250,000 passengers per day
- Over 80% of U.S. consumers are within a 2-hour flight time from Atlanta
- Foreign Trade Zone #26 is directly connected to the airport, and is a U.S. Fish and Wildlife port of entry
- ATL handles 95% of the state's annual air freight volume
- In 2021, 13th largest airport in the U.S. for cargo, and 43rd in the world
- Is the only air cargo perishable complex in the Southeast approved by the USDA to offer on-site cold treatment and fumigation treatment of fruit fly host plants

### AIR TRANSIT TIMES



## GEORGIA RAIL FREIGHT

### RAIL HIGHLIGHTS

- Georgia is home to 28 freight railroads (2 class-1s and 26 short-line railroads)
- Home to the largest intermodal facility on the East Coast
- Georgia has the largest railroad network in the Southeast, with over 4,600 miles of track
- Rail transport directly employs over 6,500 Georgians
- Georgia railroads move 190 million tons of freight in Georgia annually



# REGION 7-EAST GEORGIA WAREHOUSING & DISTRIBUTION

See map of regional locations

## EDUCATION

- Top Schools with Logistics Programs
- Augusta Technical College
  - Oconee Fall Line Technical College

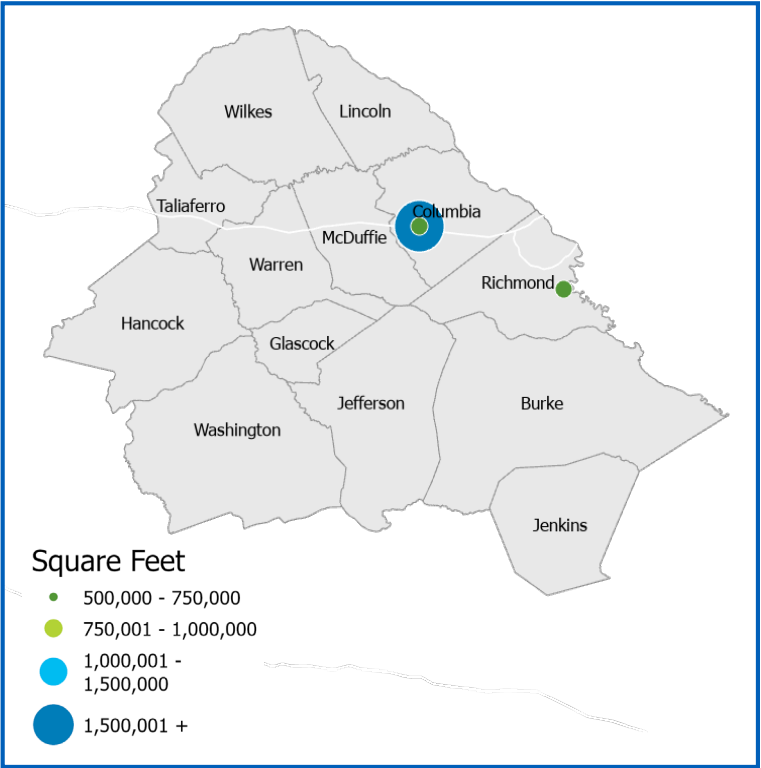
## REGION CONTACT

Adela Kelley, Sr. Regional Project Manager – akelley@georgia

## GEORGIA DEPARTMENT OF ECONOMIC DEVELOPMENT CONTACTS

- Bob Kosek, Division Director for Global Commerce, bkosek@georgia.org
- Mary Waters, Deputy Commissioner for International Trade, mwaters@georgia.org
- Lindsay Martin, Director of Entrepreneur & Small Business lmartin@georgia.org
- Sandy Lake, Director, Center of Innovation - Logistics, slake@georgia.org

The Georgia Center of Innovation’s logistics team links companies to the state’s world-class logistics industry to improve supply chain efficiencies, support growth, and increase global competitiveness. Companies that need logistics help as well as logistics companies that focus on freight transportation, warehousing and distribution, and logistics technology can tap into our team of experts who have experience in the industry and can navigate you to smart solutions and helpful resources.



Source: Georgia Power Community & Economic Development

